



WEBINAR V1.0



# HANDLE WHEELS HARD SHELL

## RETRACTABLE HANDLE

Sturdy and strong construction, this retractable handle provides confidence on uneven pavements



## WHEEL HOUSING

The real deal aluminum skid plate protects the bag from any damage & the big wheel and the wheel housing design offer high ground clearance

**EXCLUSIVE**

## FOOT FOR FRONT FRAME

The Luggage foot provides balance for the bag to firmly stand and the color accent that matches with the luggage bag color



## CALIBER HANDLE

**Item#:** PY3103R60R25\_2  
Rubberized handle grip



## CALIBER WHEEL WITH ALUMINUM RAIL

**Item#:** WR029 + WHL007 + SR031 + SR032

**Wheel diameter:** 90mm

The combination between wheels and aluminum rails provide a strong construction to support for heavy loads from the bike inside the bag. Also, large diameter wheels offer a 55mm high ground clearance to maneuver over rough pavements.



Bike bag - Bicycle - North America - Orucase

Copyright © Trimmers. All rights reserved.

## RETRACTABLE HANDLE

**Section:** 2 section, 3 section, 4 section

**Material:** Steel

**Components:** Handle grip, Middle bracket, Bottom bracket

Due to its steel construction, it allows to pull substantially heavy loads. Available up to 4-section handle for minimum folded length to use on limited space.





## RETRACTABLE HANDLE

**Section:** 2 section, 3 section, 4 section

**Material:** Steel

Components: Handle grip, Middle bracket, Bottom bracket  
Due to its steel construction, it allows to pull substantially heavy loads. Available up to 4-section handle for minimum folded length to use on limited space.



Luggage - Camping - North America - IGLOO

## HARD SHELL 22" &amp; 29"

EXCLUSIVE



EXCLUSIVE

## CALIBER ZERO WIDE HANDLE

Extra wide retractable handle design for better stability and maneuverability

EXCLUSIVE

PORTLAND SHELL  
FOOT RAIL

EXCLUSIVE

## LOCOMO TWILL WHEEL

Heavy-duty oversized wheel allows it to smoothly maneuver over rough paths

## SUPERLITE SHELL TRAY HANDLE

**Item #:** PY1414R29KR007\_3

Strong retractable handle construction with easy to operate handle grip, which offers stability and comfort when traveling around.

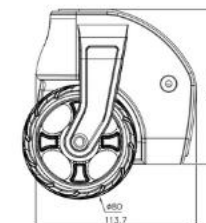


## LOW PROFILE MONO FOOT



**Item #:** SR026

Four different heights (25mm, 27mm, 32mm, 38mm) can be used for any bags to protect the bag from any damages.



## SUPERLITE BIKE WHEEL

**Item #:** WR036 + WHL032

**Wheel diameter:** 80mm

Durable & stable wheel allow to roll smoothly and effortlessly across tarmac and airport flooring.





## CALIBER WHEEL

**Item#:** WR030 + WHL007

**Size:** 90 mmL

**Material:** PP + TPU

Honey comb wheel hub provides premium look and shock absorbing feature



## EASY ACCESS MONO FOOT

**Item#:** SS004

**Size:** 247 mmL

**Material:** PP

Simple and practical luggage foot



## EASY ACCESS MONO RAIL

**Item#:** SR008

**Material:** PP

Protects luggage bottom from any scratches and impacts



## METALLIC DUAL SLOT CURVED WEB HANDLE

**Item#:** HG509

**Material:** Aluminum

The aluminum handle offers robust grip with two color webbing scheme



## LOCOMO PRO HARDSHELL BOTTOM COMPARTMENT

Item#: PY6703R60R25 +  
WR062 + WHL045



**Wheel Diameter:** 84 mm  
Honey comb wheel hub  
provides premium look and feel

## EXCLUSIVE AKITA HANDLE

The ESD coated handle tubes have the premium look with glossy surface with excellent corrosion resistance.



## AKITA TOP HANDLE

Item#: HG068

A low profile design of top carry handle that is well-matched with compact and strong hard case luggage. Easy lifting and handling.

## EXCLUSIVE HARD SHELL



## AKITA SPINNER WHEEL

Item#: WR069 + WHL051  
**Wheel Diameter:** 48mm

Minimal style. Multi-directional single wheels allow smooth, 360-deg degree movement





## CALIBER CORNER PROTECTOR

**Item#:** CP009

Offers durability to safeguard your luggage corners from damage

## CALIBER WHEEL

**Item#:** WR029 + WHL007

Wheel Diameter; 90mm  
Reinforced edge design provides a 55mm high ground clearance, which helps the bag rolling smoothly on concrete surface.



## SUPERLITE TREAD WHEEL

**Item#:** WR036+WHL014

**Diameter:** 80mm

Heavy-duty oversized wheel allows it to smoothly maneuver over rough paths





## SPEEDLITE FLAT TRAY HANDLE

**Item#:** PY1010W11R28\_3

**Material:** Aluminum + PP

Lightweight and sturdy design



Luggage - Golf - North America - Titleist

Copyright © Trimmers. All rights reserved.

## RETRACTABLE HANDLE 30" EXCLUSIVE

**Size:** 60/102CM\_30"

Very sturdy and strong construction with two buttons on the side of handle grips to prevent accidental activation of the button



## 30" RT SHELL

**Size:** 718x390x130mm (30")

Durable PC shell

EXCLUSIVE



## WHEEL

EXCLUSIVE

**Wheel Diameter:** 90mm

The large wheels make pulling easy with heavy load



## CORNER PROTECTOR

**Item#:** CP011

**Material:** Aluminum

Various colors available to match your handle color



## CRUISER HANDLE

**Item#:** PY3203AL77W67\_2

Sturdy handle construction. Various colors can be applied on handle tubes



## LOCOMO ADVENTURE HARD SHELL

**Item#:** SH161



## LOCOMO TWILL WHEEL

**Item#:** WR062 + WHL032

**Wheel Diameter:** 80mm

**Material:** Aluminum + PP + TPU

Anodized aluminum side frame provides stability on the wheel



## METASTICS™ MONO FOOT

**Item#:** SR033

**Material:** Aluminum + PP



## CALIBER HANDLE

**Item#:** PY3103R60R25\_2

Very sturdy and strong construction, this retractable handle provides confidence on uneven pavements, and the soft durable rubber grip offers extra comfort.





EXCLUSIVE

**SIDE FRAME**

Strong aluminum frame protects your bag from any damages.



EXCLUSIVE

**BOTTOM & WHEEL**

Big tread wheels with plastic frame allow smooth and easy maneuverability



EXCLUSIVE

**RETRACTABLE HANDLE**

One handle tube system with unique fish-tail handle grip design



EXCLUSIVE

**BOTTOM FRAME**

One handle tube system with unique fish-tail handle grip design

## CALIBER HANDLE

**Item#:** PY3103R25R26\_2

Best for attached inside the bags.  
this retractable handle provides confidence  
on uneven pavements, and the soft durable  
(ABS+TPR) rubber grip offers extra comfort.



## CALIBER WHEEL

**Item#:** WR030 + WHL014

**Wheel Diameter:** 80mm

**Material:** PP + TPU

Lightweight wheel system  
offers easy maneuverability.

## SUPERLITE HANDLE

**Item#:** PY1414R29KR007

**Section:** 2 section, 3 section

Very sturdy and strong construction, this retractable handle provides confidence on uneven pavements, and the soft durable rubber grip offers extra comfort. Best for attached inside the bags



## SUPERLITE HANDLE

**Item#:** PY1414R29KR012\_2

Various colors are available for handle tube, which can match perfectly your bag's colors.



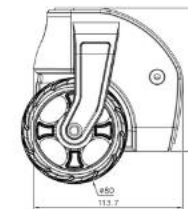
## SUPERLITE BIKE WHEEL

**Item#:** WR036 + WHL032

**Wheel Diameter:** 80mm

**Material:** PP + TPU

Durable & stable wheel allow to roll smoothly and efficiently across tarmac and airport flooring.





## AKITA ROUND TRAY HANDLE FOR SOFT BAG

**Item#:** PY2710R06R28\_2

Strong and sturdy construction, this retractable handle provides confidence on uneven surfaces, and the soft durable rubber grip offers extra comfort.



### CRUISER FOOT

**Item#:** SR003



### CRUISER SKID PLATE

**Item#:** KR005

Strong and durable. The vertical pattern allows it to glide over obstacles smoothly.

### CALIBER WHEEL

**Item#:** WR030 + WHL007

**Wheel Diameter:** 90mm

**Material:** PP + TPU

90mm diameter wheel with 55mm ground clearance offers smooth and easy maneuverability.







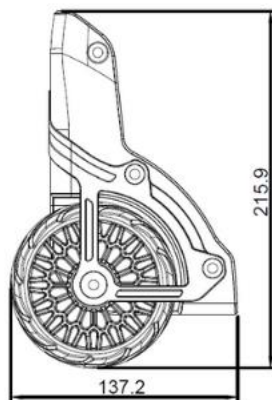
## LOCOMO TWILL WHEEL

**Item#:** WR058 + WHL041

**Wheel Diameter:** 100mm

Heavy-duty oversized wheel with 100 mm in diameter allows it to smoothly maneuver over rough paths. Aluminum frame helps to evenly distribute the load applied on axle.

Also, the honey comb wheel hub design adds upscale look too



**EXCLUSIVE**  
**SKID PLATE**

Made with strong and high quality PP and it has the vertical pattern allowing it to glide over obstacles smoothly

## SUPERLITE SHELL TRAY HANDLE

**Item#:** PY1414R29KR007\_3

ESD coated handle tubes have the premium look with glossy surface with excellent corrosion resistance.

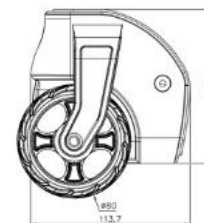


## SUPERLITE TREAD WHEEL

**Item#:** WR036 + WHL014

**Wheel Diameter:** 80mm

The large wheels make light work of rolling when loaded heavy.



## EASY ACCESS MONO FOOT

**Item#:** SS004

**Size:** 247 mmL





### EASY ACCESS MONO FOOT

Item#: SS004  
Material: PP



### CRUISER SKID PLATE

Item#: KR005  
Material: PP



### MALIBU SQUARE TRAY HANDLE

Item#: PY4215L38R32\_2

ESD coated handle tubes have the premium look with glossy surface with excellent corrosion resistance.

### EASY ACCESS MONO RAIL

Item#: SR008  
Material: PP







## CALIBER ROUND TRAY HANDLE

**Item#:** PY3103L14R28\_2

ESD coated handle tubes have the premium look with glossy surface with excellent corrosion resistance.



## EASY ACCESS MONO FOOT

**Item#:** SS004

Made with PP, this item helps the luggage stand easily on the floor and durable, strong enough to grab & lift from luggage carousels.

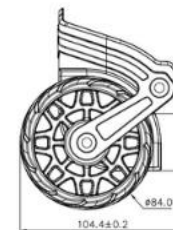


## LOCOMO TWILL WHEEL

**Item#:** WR062 + WHL045

**Wheel Diameter:** 84mm

Heavy-duty oversized wheel is made of Polypropylene (PP) and aircraft grade aluminum, making it light and strong; allowing it to smoothly maneuver over rough paths.







EXCLUSIVE

## BIKE BAG WHEEL

Extra layer of protection on the side of the wheels



## EASY ACCESS MONO RAIL



**Item#:** SR008

**Material:** PP

Available in 5 sizes from 381mm to 860mm, Protect from scratches and damages on the luggage surface.

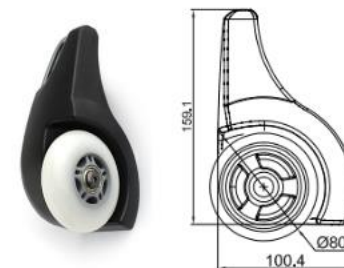


## LOOP HYPER ELASTIC WHEEL

**Item#:** WR003 + WHL022

**Wheel diameter:** 84mm

Solid wheel supports strength when moving on rough surfaces



## MALIBU HANDLE

**Item#:** PY4215R37R32

Wide handle design provides extra stability. Black ESD coating and anodizing surface treatment with various colors available.



## CRUISER WHEEL

**Item#:** WR031 + WHL023

**Wheel Diameter:** 84mm

Wheel reinforcement offers support of axle load to strengthen the wheel for heavy loads. Anodized aluminum insert provides color accent with various colors..



## LOW PROFILE MONO FOOT

**Item#:** SR026

**Material:** PP

Provides protection from scratches and damages along with luggage height balance. Comes in 4 different heights from 25mm to 38mm.





## ICE BREAKER HANDLE

**Item#:** PY0303L11R03  
Sturdy one tube handle construction



## CRUISER FOOT

**Item#:** SR003  
Made with PP, ensuring durability and protection from any damages



## CRUISER WHEEL

**Item#:** WR031 +WHL023  
The side reinforcement will help ease with the load distribution on axle





## SEWABLE SHELL CORNER PROTECTOR

Item#: CP010

Ideal for duffels & soft bags



## CALIBER CORNER PROTECTOR

Item#: CP009

EXCLUSIVE

## 5.11 SMALL LUGGAGE

including PC Shell, Retractable  
Handle and Wheels





## CALIBER WHEEL

**Item#:** WR029 + WHL007

**Size:** 90 mmL

Durable & stable when moving on uneven surfaces



## EASY ACCESS MONO RAIL

**Item#:** SR008

**Material:** PP



## HARD SHELL 40L



**EXCLUSIVE**

### WHEEL

Big tread wheel provides a 50mm high ground clearance and smooth rolling on any pavements

**EXCLUSIVE**

### CALIBER HANDLE

ESD coated handle tubes have the premium look with glossy surface with excellent corrosion resistance.



### METALLIC SINGLE SLOT STRAIGHT WEB HANDLE

**Item#:** HG517

Light and strong with color accents





## DUST FREE HEAVY DUTY RAIL

**Item#:** SR022

**Material:** PP

Protective rail that is available in 4 different sizes



## CALIBER WHEEL

**Item#:** WR029 + WHL007

**Wheel Diameter:** 90mm

The large wheels make light work of rolling when heavily loaded.

## SPEEDLITE ROUND TRAY HANDLE

**Item#:** PY1010R26R28\_2



## LOW PROFILE MONO FOOT

**Item#:** SR026

**Material:** PP





## HARD SHELL 22"

Item#: **SH026**

Made with strong Polycarbonate (PC) plastic. Custom debossed logo and can be applied on the shell.



## RETRACTABLE HANDLE

**Material:** Aluminum + ABS

ESD coating for tube & ABS hand grip offers comfortable feeling when pulling heavy loads

EXCLUSIVE



EXCLUSIVE

## FOOT RAIL

**Material:** PP + Aluminum

Extra long luggage foot for maximum stand still balance



## WHEEL

**Material:** PP + TPU

Big wheel 84mm smoothly maneuver over rough paths.



EXCLUSIVE

## MALIBU HANDLE

**Item#:** PY4215R37W41  
Light weight handle with sturdy construction



## DOUBLE SPINNER WHEEL

**Item#:** WR047 + WHL034  
360 degree rolling allows the luggage can maneuver effortlessly when travelling around.



## WHEEL

Features axle support reinforcement with aluminum insert color scheme



## LOOPER HANDLE

**Item#:** PY1414W05W05



## SPEEDLITE HANDLE

**Item#:** PY1010R26R25  
Light weight and minimal design retractable handle

## SORENT GRILL SEWABLE RAIL

**Item#:** SR027



## SPEEDLITE UPRIGHT WHEEL

**Item#:** WR009 + WHL002  
**Wheel Diameter:** 70mm



## ICE BREAKER HANDLE

**Item#:** PY0303L11R27

Sturdy one tube handle construction



## ICE BREAKER WHEEL

**Item#:** WR002C + WHL022

A wheel design is great for small bags including school wheeled bags, tool bags, etc



## SEWABLE SKID PLATE

**Item#:** KS001

Protects luggage bottom and the vertical pattern makes it easy to glide over obstacles



**WHEEL** **EXCLUSIVE**

A wheel set that has unique scheme like skateboard wheels

**SPACESHIP MONO**

Item #: PY4503W39WR42\_203 + FM036 + FM014

One tube design - all in one trolley system



**TRIMMERS**  
HARDWARE COMPANY

**FEATHERLITE DUAL ALL-IN-ONE SYSTEMS**

Item #: PY4215W4OWR42 + FM012 + FM014

**SUPERLITE BIKE WHEEL**

Item#: WR036 + WHL032

Diameter size: 80mm

Compact wheel is great for business luggage



## LOCOMO PRO HARDSHELL BOTTOM COMPARTMENT

Item#: PY6703R60R25 + WR062 + WHLO45 + SH141



### RETRACTABLE HANDLE

Superb grip & outstanding comfort and feel with the Hex-textured TPR rubber.



### EASY ACCESS MONO FOOT

Item#: SS004





## CRUISER ROUND TRAY WHEEL

**Item#:** PY3203R27R28

Superb grip & outstanding comfort and feel.



## CRUISER WHEEL

**Item#:** WR031+WHL001

Features axle weight support to handle heavy loads



## SEWABLE SKID PLATE

**Item#:** KS001

Protects the luggage bottom from scratches and impacts

## ALUMINUM RAIL

**Item#:** SR031+SR032

Provides protection and the color accent that matches the luggage bag color



## CRUISER WHEEL

**Item#:** WR031 + WHL023



## SUPERLITE SHELL TRAY HANDLE

**Item#:** PY1414R29KR007

Strong and sturdy construction



## EASY ACCESS MONO FOOT

**Item#:** SS004

Made with aluminum and plastic for strong and lightweight feature



## WHEEL

**Item#:** WR036+WHL014

EXCLUSIVE

## CALIBER HANDLE

**Item#:** PY3103L14W11

This retractable handle provides confidence on uneven pavements, and the soft durable rubber grip offers extra comfort grip



## SINGLE SPINNER WHEEL

**Item#:** WR047+WHL037

Multi-directional oversized spinner wheels for effortless mobility

## ALUMINUM RAIL

**Item#:** HG525

Provides extra rigid construction

## ALUMINUM LOGO PLATE

**Item#:** OR192

Presents the company logo with upscale look and feel

## AKITA ROUND TRAY HANDLE

**Item#:** PY7205R61R50

ESD coated handle tubes have the premium glossy look with excellent corrosion resistance.

EXCLUSIVE

## HARD SHELL

Customized hard shell with custom logo on its surface

## WHEEL

**Item#:** WR079 + WHL058  
Multi-directional dual spinner wheels for effortless mobility, re-engineered lightweight





## LOCOMO ADVENTURE BOTTOM COMPARTMENT

Item#: PY3203AL77W67 + WR062 + WHL045 + CP011



### CALIBER HANDLE

Superb grip & outstanding comfort and feel with the Hex-textured TPR rubber underneath the handle grip.



### METASTICS™ MONO FOOT

Item#: SR033

Made with PP material with an aluminum tube, providing more strength needed to handle heavy weights to protect the bottom of luggage with uncompromising style.



### CORNER PROTECTOR

Item#: CP011

Material: Aluminum

Various colors available to match your handle color



### LOCOMO TWILL WHEEL

Item#: WR062 + WHL045

Wheel Diameter: 84mm

Heavy-duty oversized wheel is made of Polypropylene (PP) and aircraft grade aluminum, making it light and strong; allowing it to smoothly maneuver over rough paths.

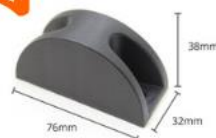




## HALF MOON FOOT

**Item#:** SR004

The special shape of this item is inspired by half moon. Ideal foot to keep luggage or the cooler bag stand.



## EASY ACCESS MONO FOOT

**Item#:** SS004

A simple way to keep luggage, suitcase balance. Multiple height sizes for any applications.



**DRAFT**

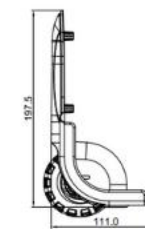
**TRIMMERS**  
HARDWARE COMPANY

## SPEEDLITE UPRIGHT WHEEL

**Item#:** WR009 + WHL011

**Wheel Diameter:** 70mm

Lightweight with stress reinforced wheel design and elegant look provides an easy movement for any golf cover, luggage and more.



## CRUISER SKID PLATE



**Item#:** KR005

A great match to protect bottom of luggage, golf bag and more. Private label available for both front & bottom.



## HYBRID SHELL TRAY HANDLE

**Item#:** PY3803AR30KR10

**Wheel diameter:** 80mm

Sturdy telescopic handle with plastic handle grip provides more comfortable when pulling heavy luggage around. Large opening middle tray also makes the handle light and stable when using.



## HYBRID CORNER GUARD

**Item#:** CP007\_0 + CP007\_1

Heavy duty corner guard protects and any abrasion on corner



## EASY ACCESS MONO FOOT

**Item#:** SS004



## HYBRID WHEEL

**Item#:** WR034 + WHL014

**Wheel diameter:** 80mm

A wheel design is great for small bags and luggage. Special wheel housing helps the wheels stable and maneuver smoothly on concrete pavement.





# CONTACT INFORMATION

---

## MAILING ADDRESS

Road 6, Song Than 3 Industrial Park,  
Thu Dau Mot City, Binh Duong, Viet Nam

## EMAIL ADDRESS

[sales@trimmers-pro.com](mailto:sales@trimmers-pro.com)

## PHONE NUMBER

(84) 274 3 798 700

